

GALAHs FIFA RTWC 98 Update

Version - 1.70

Features:

- EA Sports official update 1.40
- New self extracting installation method
- New shortcuts are installed in the Start menu

Benefits:

- [This is the only FIFA RTWC 98 engine update required for all users!!!](#)
- Enables Direct3D acceleration and Glide acceleration enhancements.
- Compatible with most 3D accelerated graphic cards (D3D and 3dfx)
- 3dfx users can choose to use Software, Glide or Direct3D acceleration.
- Direct3D mode has been fully tested with DirectX 9.0b
- 3D accelerated games will run smoother, faster and have clearer graphics.
- Artificial Intelligence improvements for a more realistic and challenging game.
 - Improved onside logic
 - Improved breakaway logic
 - CPU shooting logic improvements
- Uses a self-extracting installation process (Zipped to maximize download times)
- Only affects FIFA RTWC 98
- It's available for no charge!!!

System Requirements:

- EA Sports FIFA RTWC 98
- Microsoft Windows 95 / 98 / ME / XP
- Microsoft DirectX 6 or higher installed.
- Windows 9x systems requires WinZip, WinRAR or similar to be installed.
- 3D acceleration requires a 3dfx or Direct3D compatible graphics card or chipset.

Installation Process:

- Download [fifa98_update.zip](#)
- Double-click to Open the file (Requires WinZip or similar)
- Double-click on [setup.exe](#) to start the installation
- Follow the on-screen prompts
- Load the game from the appropriate shortcut in your **Start** menu.

Uninstall:

- **Replace** the following file with those found on your FIFA RTWC 98 CD-ROM.

C:\Program Files\EA SPORTS\FIFA RTWC 98\ [fifartwc.exe](#)

- **Delete** the following file located in the folder shown below:

C:\Program Files\EA SPORTS\FIFA RTWC 98\ [Readme3D.html](#)

Support:

- Email - galahs.australia@gmail.com
- Website - fifa.galahs.com.au

Troubleshooting:

- Ensure the patch was installed into your FIFA RTWC 98 folder. (See tutorial below)
- For best results this patch should be the first thing one installs after installing or re-installing FIFA RTWC 98
- Install the latest version of Microsoft DirectX that your system supports. Below is the latest DirectX version for each system GALAHs FIFA RTWC 98 Update was tested with.

Windows 95 - **DirectX 8.0a**
Windows 98 - **DirectX 9.0c**
Windows ME - **DirectX 9.0c**
Windows XP - **DirectX 9.0c**

You can get the latest DirectX version from:

<http://www.microsoft.com/directx>

- Have the latest drivers for your graphics card installed. These can usually be obtained online from your graphic card manufacturers website.
- 3dfx Cards – With the collapse of 3dfx the latest drivers can be obtained from:

The 3dfx Archive - www.falconfly.de/3dfx
Voodoo Files – www.voodooofiles.com

For 3dfx acceleration your drivers must support Glide2x. You can check this by searching your computer for a file named **glide2x.dll** in the following folder:

Windows 9x – C:\Windows\System
Windows XP – C:\Windows\System32

FIFA RTWC 98 does not support Glide3x

Note: Glide acceleration may not function correctly under Windows XP

- The download file [fifa98_update.zip](#) is compressed using the ZIP compression method. Windows XP can open this file without any additional software installed. Windows 95 / 98 and ME require a ZIP utility installed to open ZIP files. Many of these ZIP utility programs can be downloaded and used for free. My favourite ZIP utilities in order are:

WinZip www.winzip.com (Shareware)
WinRAR www.rarsoft.com (Shareware)
FreeZip www.braxio.com (Freeware)

(Freeware – You can use these as much as you like without paying for them. They are Free!!!)
(Shareware - If you use these packages for more than 30 days you *should* purchase them)

Tutorials:

Installation

The most common problem is that the patch was not installed into the FIFA RTWC 98 folder. By default this should be located at:

C:\Program Files\EA SPORTS\FIFA RTWC 98

If FIFA RTWC 98 is installed elsewhere, choose **Browse** from the Installation window. Search through your system until you find where FIFA RTWC 98 is installed, open its primary folder (which is usually named FIFA RTWC 98 or similar), and then click **OK**.

You will return to the screen below with the location of your FIFA RTWC 98 folder shown in the *Destination folder* drop-down text bar. Now select **Install**. The program will now install the files into the folder displayed in the *Destination folder* drop-down text bar.

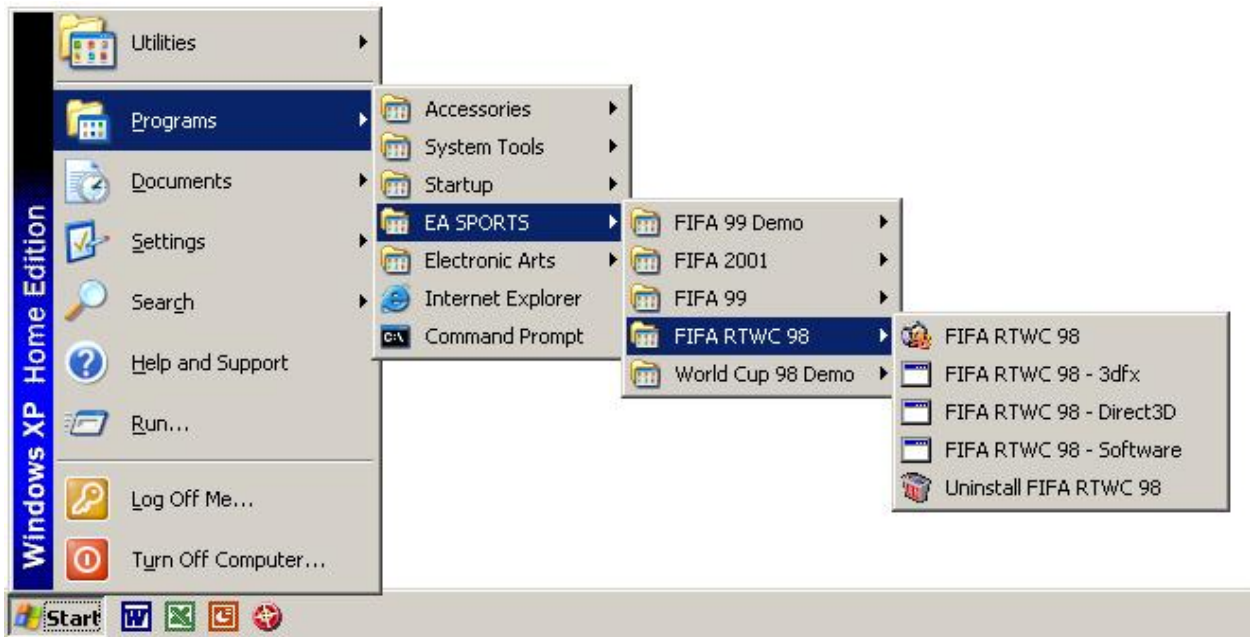


Configure

This patch can be customised by selecting different shortcuts to run FIFA RTWC 98 from the Windows Start menu.

Start, Programs, EA SPORTS, FIFA RTWC 98

Navigate the Start menu as shown below. You will be presented with three new options:



3 New Options

This allows the user to choose the method of how they would like the computer to draw the screen graphics. The options are:

FIFA RTWC - Software

The computers CPU will do all the graphics work. This mode will produce the slowest in-game performance and the worst looking graphics. If your computer has a 3dfx or Direct3D compatible graphics system (most have), don't use this mode.

FIFA RTWC - Direct3D

Uses Direct3D (a component of Microsoft's DirectX API) acceleration. Direct3D allows the games graphics to be handled by your 3D graphics card rather than the Computers processor. This will produce faster game play and good graphics. Most users should select this option.

FIFA RTWC - 3dfx

It allows FIFA RTWC 98 to be rendered using 3dfx's own proprietary Glide API. For 3dfx users this will produce the best performance and graphical images. If users without 3dfx cards choose this option, the software will default to run in Software mode.

Details:

Support:

This version of GALAHs FIFA RTWC Update has been made available in an effort to improve the graphical quality and performance of FIFA RTWC 98. Its secondary purpose is to minimise the confusion associated with choosing which of the official EA Sports patches to install. Now all users can install this one patch to receive the latest AI updates and the full complement of 3D acceleration options. This patch also adds generic shortcuts to the FIFA RTWC 98 folder in the Windows Start menu. This makes it much easier to enable 3D acceleration.

Report problems and suggestions relating to the Beta on the [Older FIFA Titles Forum](http://www.soccergaming.tv) at www.soccergaming.tv

Frame Rate:

FIFA RTWC 98 is limited to your refresh rate.

Resolution:

FIFA RTWC 98 is limited to 640x480.

Colour Depth:

FIFA RTWC 98 is limited to 16bit colour.

What's New:

1.70

- Combines EA Sports official patches 1.30 and 1.40
- 1.30 + 1.40 = 1.70
- New, easier installation method.
- New Windows Start menu shortcuts
- Supports 3dfx, Direct3D and Software

Official EA Sports Releases

1.40

- Improved AI
- 3dfx settings for 3dfx Voodoo 2 cards.
- No Direct3D shortcuts included.

1.30

- Improved AI
- Direct3D acceleration option.

Credits:

- GALAHs Australia
- Valiant Freak

Troubleshooting:

Windows XP

- To install Fifa98 RTWC on a Windows XP system, you have to go to:

My Computer à Right click on Fifa98 CD à Select **Open** à Right Click on **AUTORUN.EXE** à Select **Properties** à Select **Compatibility** tab à Under Compatibility Mode select "**Windows 95**" à Select **Apply** à Select **OK** à Now double left click on **AUTORUN.EXE** à follow installation prompts.

- Fifa98 TRWC may need to run in compatibility mode (Windows 98/Me). Only do so if FIFA98 RTWC doesn't work without this setting because it does slow down gaming performance.
- 3dfx Glide may not function correctly under WinXP. Try Direct3D or Software modes
- Some display drivers operate best with the desktop set to 16bit colour.

INSUFFICIENT MEMORY TO CONTINUE

- If you get a INSUFFICIENT MEMORY TO CONTINUE error you may have to reduce the amount of Windows Virtual memory or even completely disable it.
- For systems with large amounts of physical memory (RAM), the above step alone may not be enough. You may have to limit the amount of physical RAM available to Windows. Either through software modifications or by actually physically removing RAM from your computers motherboard.

Windows 95/98/Me Resolution

This is how you can limit the amount of RAM Windows 95/98/Me can use with a simple software command. Just add the following line to the [386enh] section of the System.ini file: MaxPhysPage=30000

This limits the amount of physical RAM that Windows can access to 768 MB.

To do so, use the following steps:

1. Use any text editor (such as Notepad) to edit the System.ini file.
2. Add the following line in the [386Enh] section of the file

```
MaxPhysPage=30000
```

3. Save the file, and then restart your computer.

To again allow all your RAM to be used by Windows just delete the MaxPhysPage entry in system.ini, save and restart your computer.

Help Needed: If anyone knows how to limit the RAM available to Windows XP using software, registry key or system command please let me know by email: galahs.australia@gmail.com

SOUND ISSUES

- If you are having issues with your sound in the game, try minimising or disabling DirectSound acceleration.

To lower your sound card hardware acceleration setting

1. Click **Start**, and then click **Run**.
2. In the **Open** box, type:
dxdiag
3. Click **OK**.
4. On the **Sound** tab, move the **Hardware Sound Acceleration Level** slider to the left one notch, and then click **Exit**.
5. Try to run your game or multimedia program.
6. If your program does not run correctly, and hardware acceleration is still set to a level higher than **Basic acceleration**, repeat steps 1 through 5, moving the **Hardware acceleration** slider one more notch to the left.